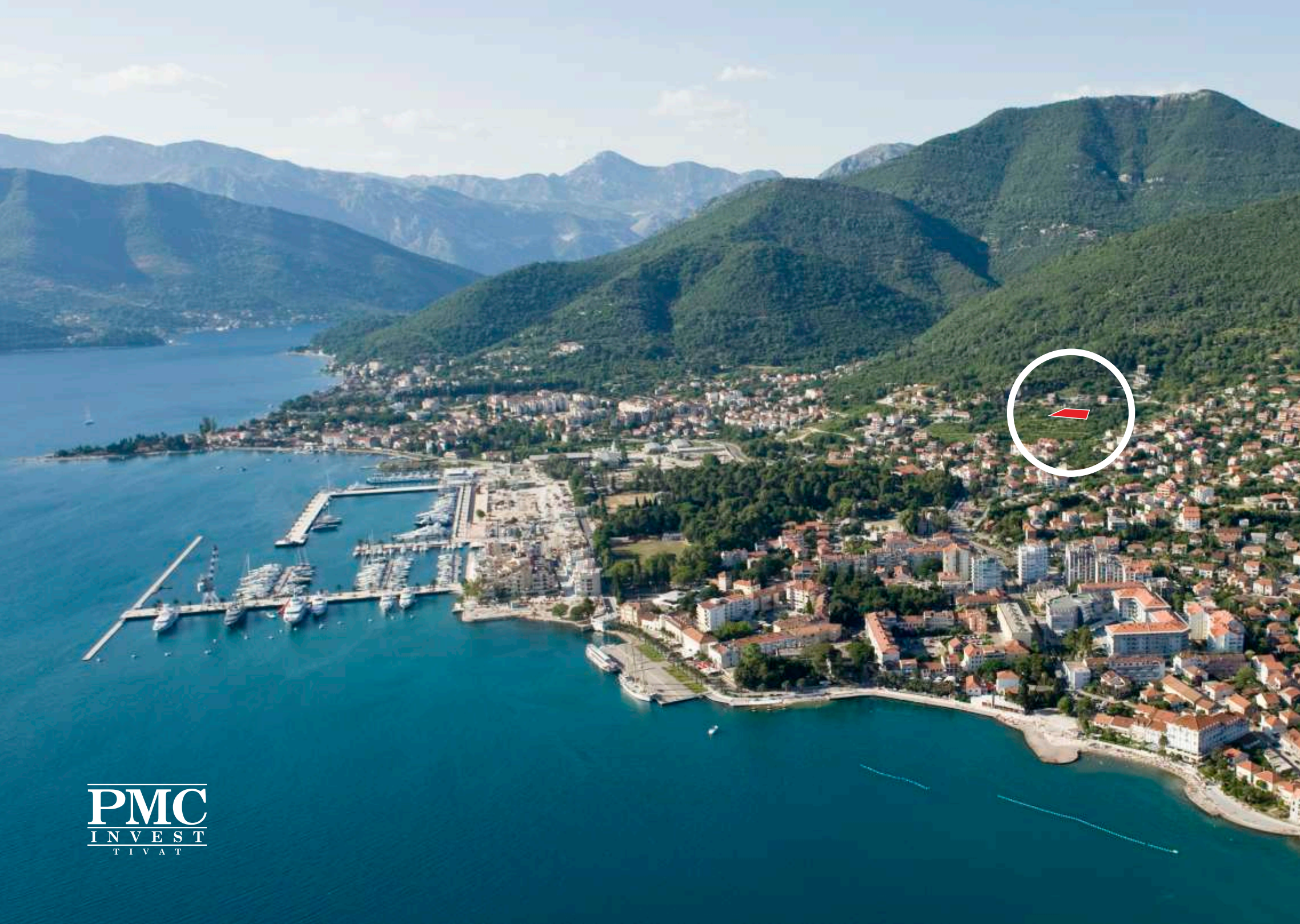




PMC
INVEST
TIVAT









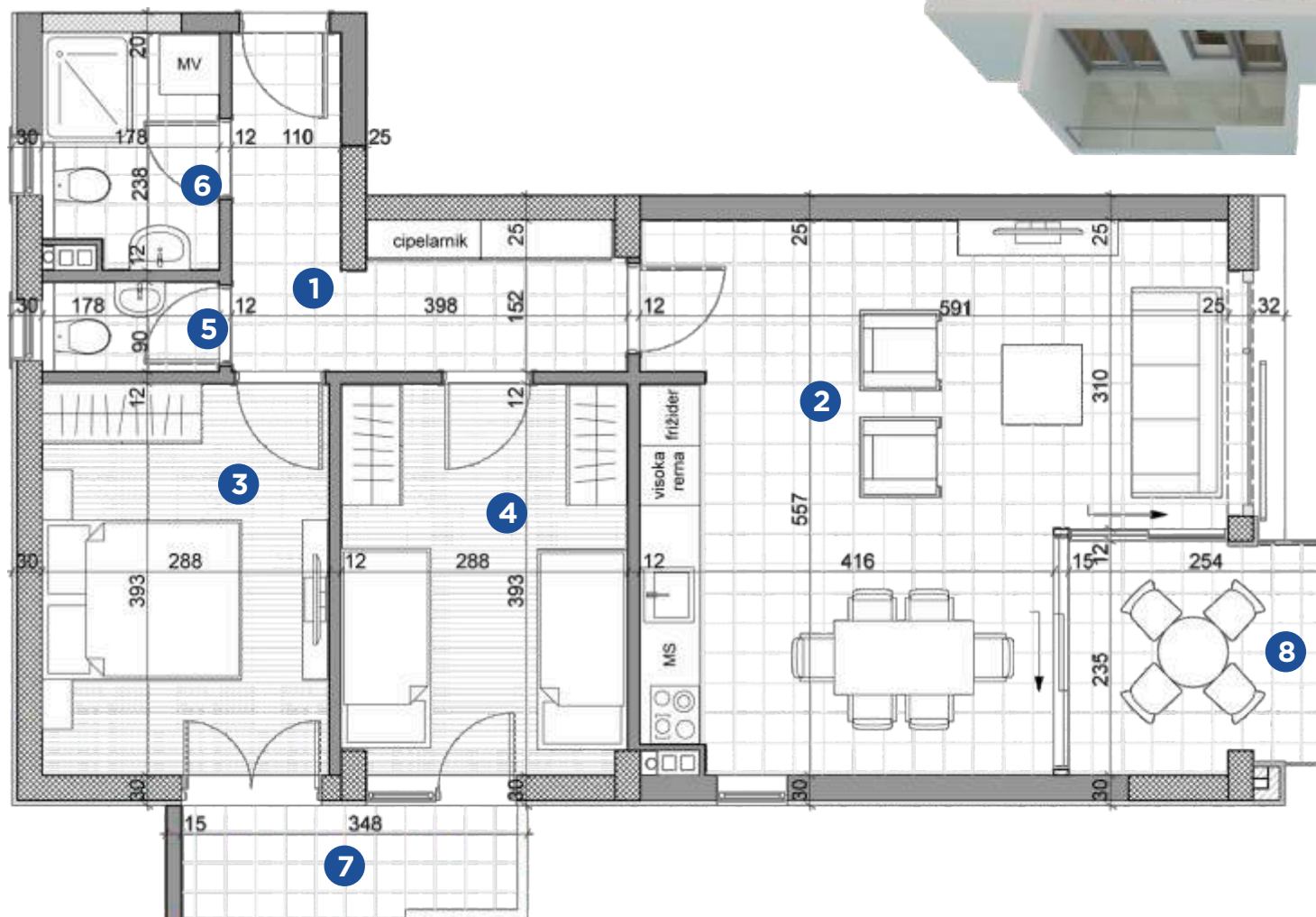
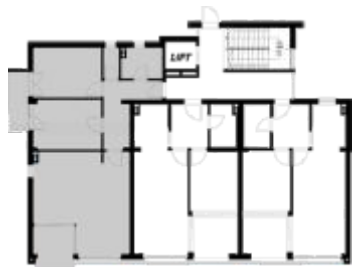


PRIZEMLJE - 1, 2, 3 SPRAT



PMC
INVEST
TIVAT

STAN 1



PRIZEMLJE

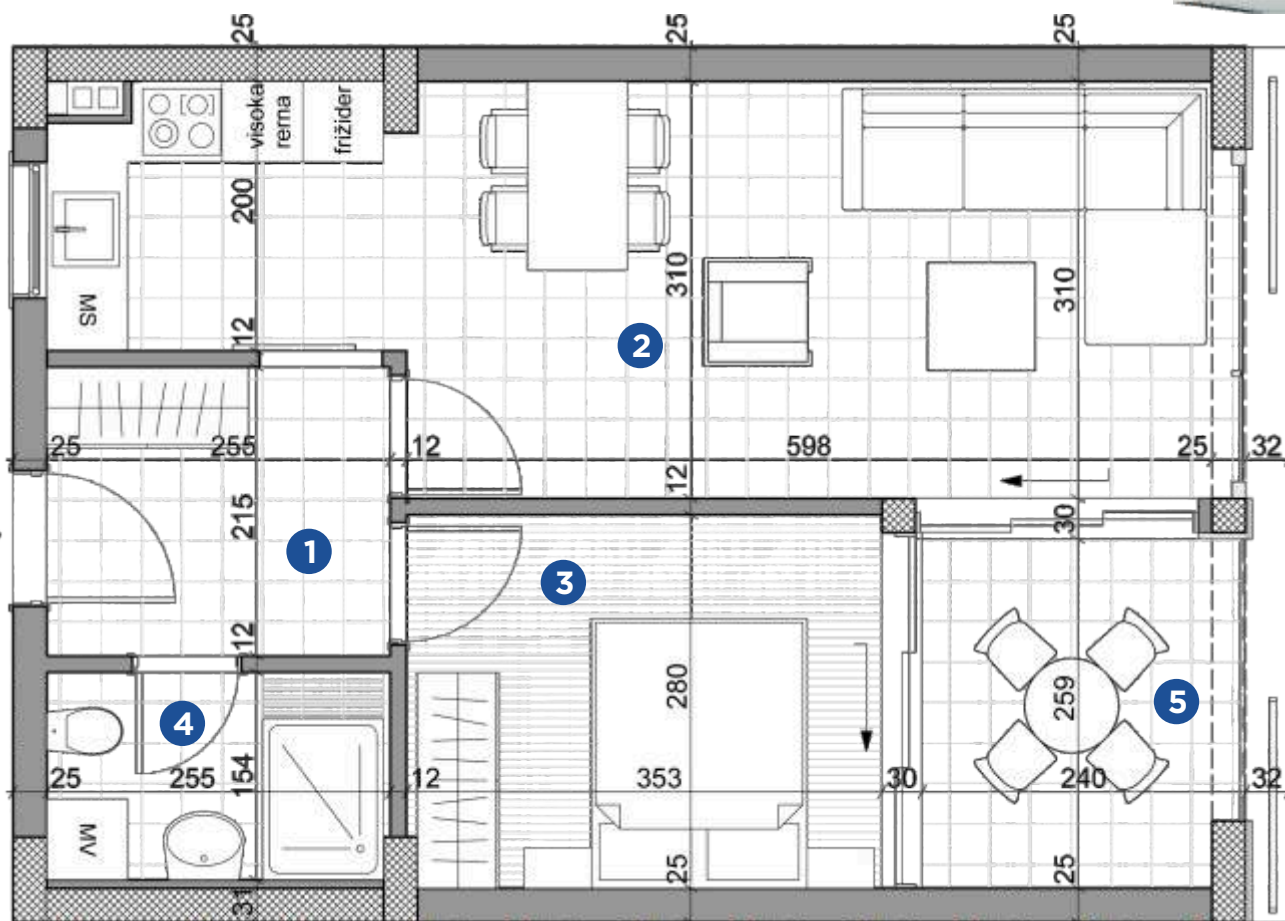
m²

1	HODNIK	KAMEN	7,97
2	DNEVNI B. + KUHI.	KAMEN	28,30
3	SOBA	PARKET	11,30
4	SOBA	PARKET	11,20
5	TOALET	KERAMIKA	1,49
6	KUPATILO	KERAMIKA	3,93
8	TERASA	KAMEN	5,84
			70,03

1, 2, 3 SPRAT

1	HODNIK	KAMEN	7,97
2	DNEVNI B. + KUHI.	KAMEN	28,26
3	SOBA	PARKET	11,30
4	SOBA	PARKET	11,26
5	TOALET	KERAMIKA	1,49
6	KUPATILO	KERAMIKA	3,93
7	TERASA	KAMEN	3,76
8	TERASA	KAMEN	5,84
			73,81

STAN 3



PRIZEMLJE, 1, 2, 3 SPRAT m²

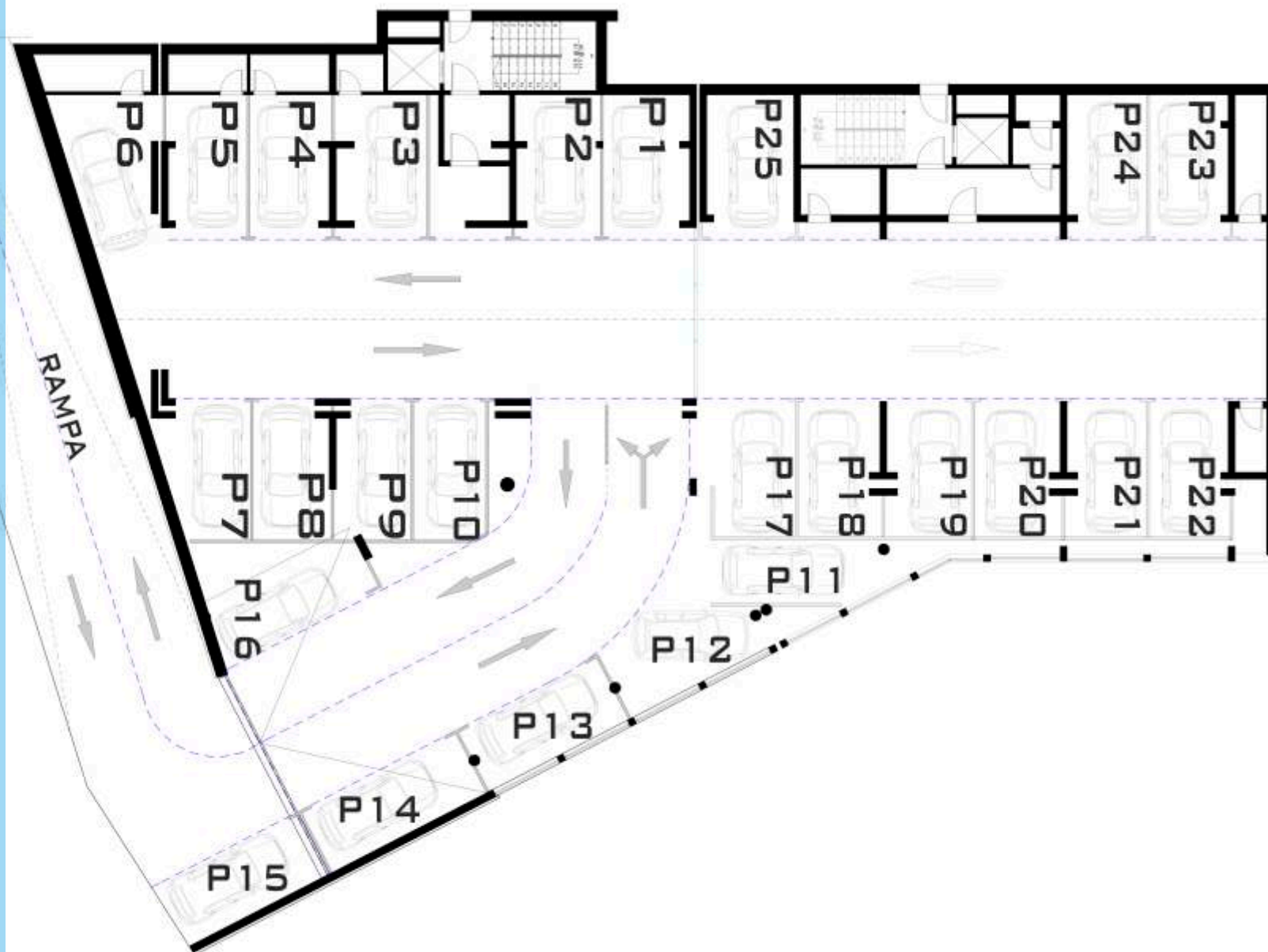
			m ²
1	HODNIK	KAMEN	5.47
2	DNEVNI B. + KUHI.	KAMEN	23.57
3	SOBA	PARKET	9.75
4	KUPATILO	KERAMIKA	3.92
5	TERASA	KAMEN	6.09
			48.80



PMC
INVEST
TIVAT

GARAŽA

25 mjesta



PMC
INVEST
TIVAT





PMC
I N V E S T
T I V A T

II Dalmatinske br. 9
85320 Tivat, Crna Gora
tel: +382 32 671 388
tel/fax: +382 32 672 388
mob: +382 67 642 758
e-mail: pmc@t-com.me
www.pmc-invest.com